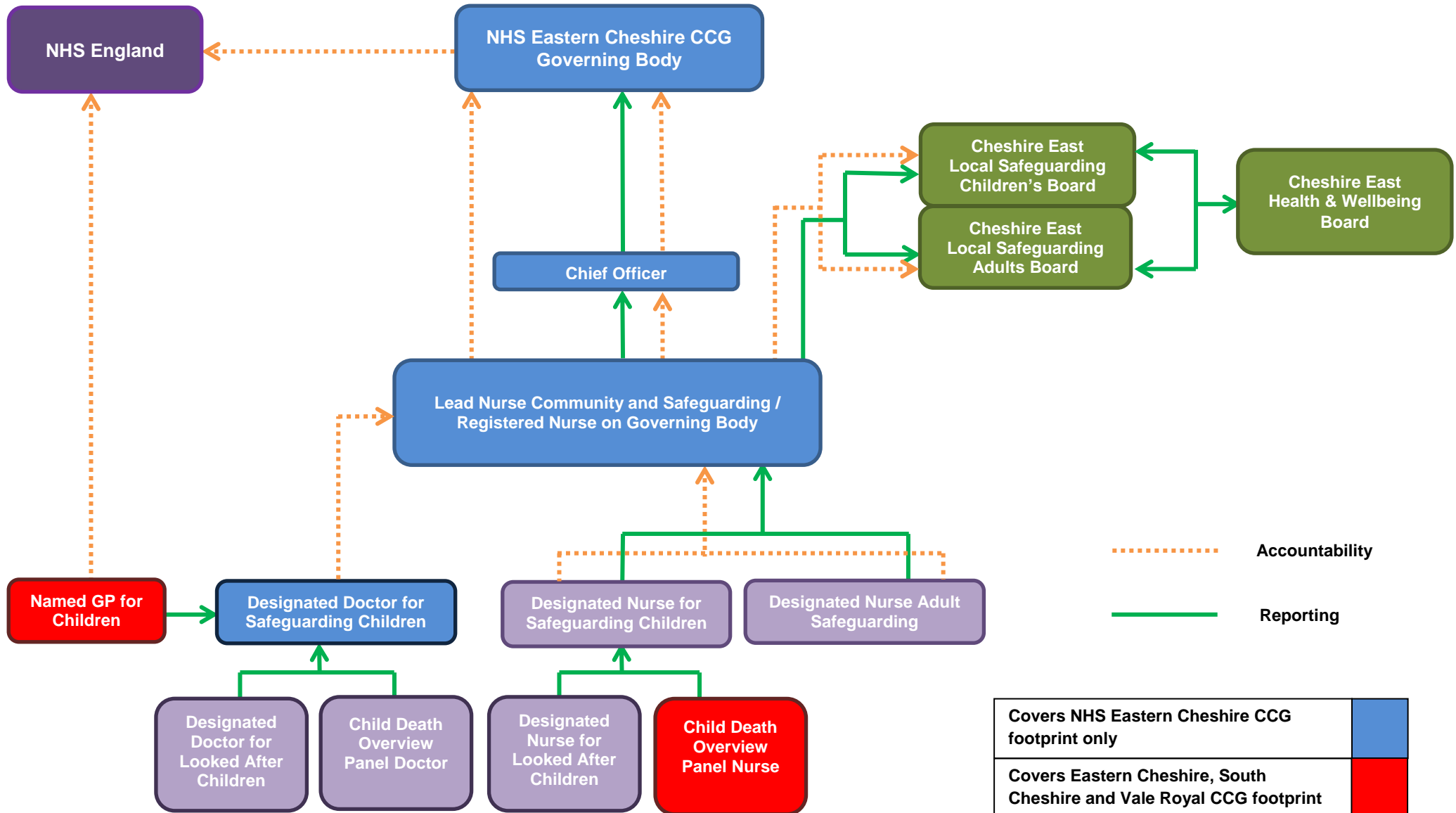


Safeguarding Governance, Reporting & Management Arrangements



..... Accountability
 ————— Reporting

Covers NHS Eastern Cheshire CCG footprint only	
Covers Eastern Cheshire, South Cheshire and Vale Royal CCG footprint	
Covers Cheshire East footprint	

- **Lead Nurse Community and Safeguarding / Registered Nurse on Governing Body**
 - Employed directly by NHS Eastern Cheshire CCG. Covers/responsible for Eastern Cheshire footprint only (0.4WTE)
- **Designated Nurse for Safeguarding Children**
 - Joint appointment between NHS Eastern Cheshire CCG and NHS South Cheshire CCG. Covers whole Cheshire East footprint. Post hosted by NHS South Cheshire CCG. (0.8WTE)
- **Designated Nurse Adult Safeguarding**
 - Joint appointment between NHS Eastern Cheshire CCG and NHS South Cheshire CCG. Covers whole Cheshire East footprint. Post hosted by NHS Eastern Cheshire CCG. (1WTE)
- **Designated Doctor for Safeguarding Children**
 - Employed by UHNS, service level agreement between NHS Eastern Cheshire CCG and UHNS to cover Eastern Cheshire footprint only. (0.2WTE)
- **Designated Doctor for Looked After Children**
 - Employed by MCHT. SLA between both CCGs and MCHT. Covers Cheshire East footprint. (0.1WTE)
- **Child Death Overview Panel Doctor**
 - Employed by MCHT. SLA between both CCGs and MCHT. Covers Cheshire East footprint. (0.2WTE)
- **Designated Nurse for Looked After Children**
 - Employed by ECT. SLA between both CCGs and MCHT. Covers Cheshire East footprint. (0.2WTE)
- **Child Death Overview Panel Nurse**
 - Joint appointment across 3 CCGs. Hosted by South Cheshire CCG. Covers Cheshire East and Vale Royal footprint. (0.5WTE)
- **Named GP for Children**
 - Employed by NHSE. Covers Cheshire East and Vale Royal footprint. (0.4WTE)